



## **Arara Abadi – A Plan for The Development Of An Area Under Moratorium**

### **Background**

Arara Abadi – Gelombang District submitted a plan for the development of an area classified under moratorium covering 271.4 Ha. Prior to the moratorium, the area was already developed into plantation, and in 2002 the area's land cover was 5 year old acacia plantation. At the time, there was a land claim over the area by a businessman from Pekanbaru, who cleared the acacia plantation and planted the area with palm oil trees. The conflicting parties went through a legal process to resolve the conflict, which resulted in a decision by the Pekanbaru District Court in 2015. The court declared that the land is legally under the company's license. Arara Abadi's plan for continuing the development of the area as production area will be processed according to APP's procedure "Protocol for New Planting at the Concession of Forest Plantation after 31 January 2013".

### **Activity Phases**

The area proposed for development was assessed according to relevant protocols. Based on the assessment results, the area is categorized as non peat and identified as non HCV and non HCS area. Therefore, the next phase is to obtain an approval from JSC (Joint Steering Committee), followed by an FPIC assessment in accordance with the relevant FPIC SOP.

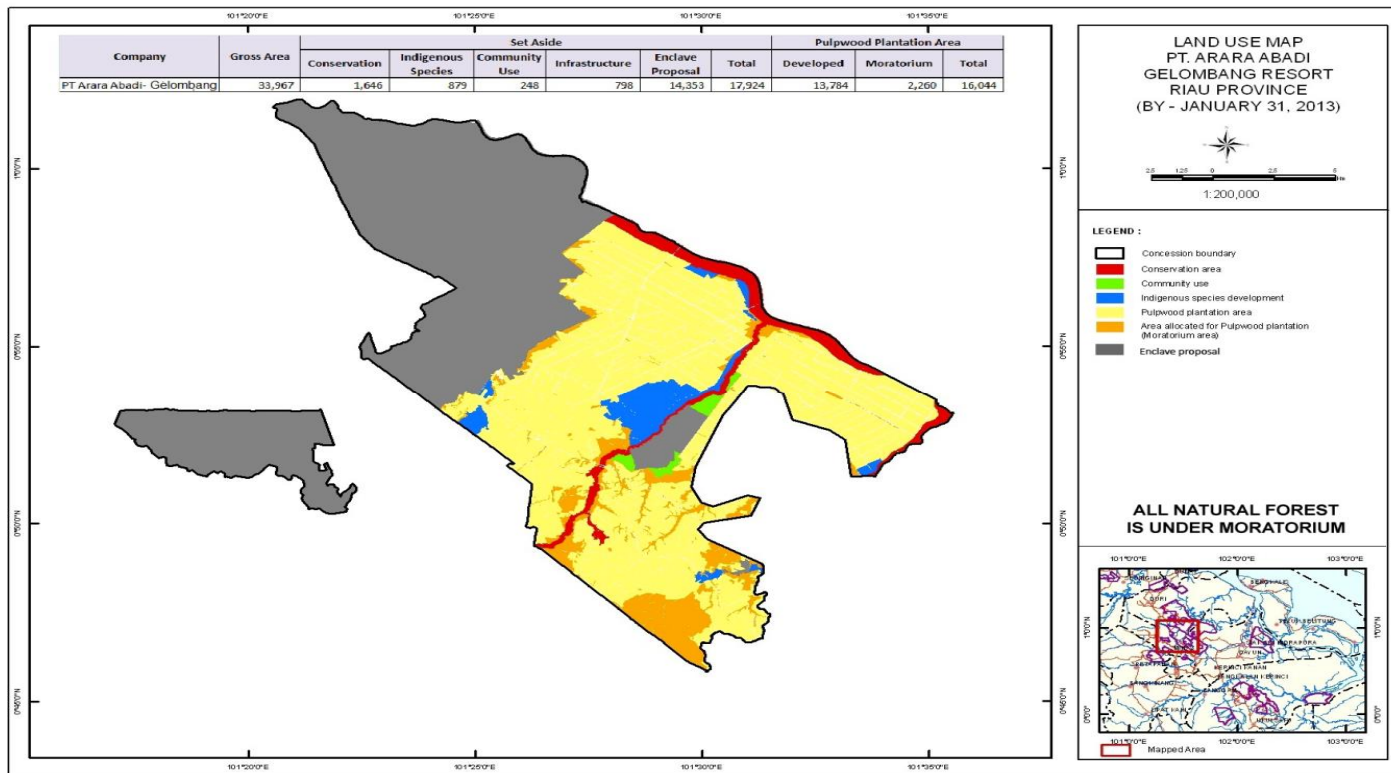


USE OUR PAPER, WE PLANT MORE TREES.

## Conclusion

Based on the “Protocol for New Planting at the Concession of Forest Plantation after 31 January 2013”, the area that Arara Abadi proposed to be developed has obtained an approval from the JSC to be developed, once FPIC is completed. Below is a map showing the previous and new spatial plan of the area:

Previous spatial plan:





New spatial plan:

